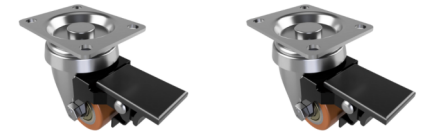
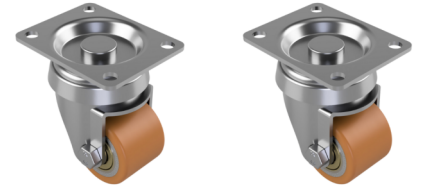


4 Pack 2 x Swivel 2 x Braked Polyurethane Cast Iron Plate 35mm 300kg Load Per Set

Product code: BZXH35PTBJ/SET

4 Pack Pressed steel 2 swivel 2 x wheel brake castor fitted with a brown polyurethane tyred cast iron centred wheel with a ball bearing. Wheel diameter 35mm, tread width 27mm, overall height 65mm. plate size 60mm x 48mm, hole centres 48mm x 34mm Load capacity 100kg per castor / 300kg total set load.



Diameter (mm)	35
Fixing Option	Plate
Castor Type	Fixed, Swivel, Swivel with Total Lock Brake
Height (mm)	65
Bearing Type	Ball
Wheel Material	Polyurethane on Cast Iron
Colour / Shore Hardness	Orange Polyuerthane on Steel Rim / 94 Shore A
Fork Thickness (mm)	2
Temperature Resistance	"-10 °C TO +80 °C
To Suit Fixing Bolt (mm)	6
Tread (mm)	27
Plate Size (mm)	60 x 48
Hole Centres (mm)	48 x 34
Top Plate Thickness (mm)	2
Configuration	2 x Swivel + 2 x Braked
Load Capacity (kg)	300 kg Load Per Set

BIL GROUP LTD

Porte Marsh Road, Calne, Wiltshire, SN11 9BW

Registered in England No: 2603821

VAT Reg: GB572705729

