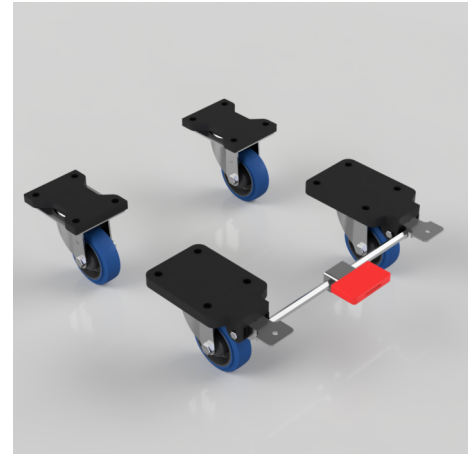


4 Pack Blue Rubber Plate Ball Bearing 150mm 900kg Load Per Set - various configurations

Product code: BZSPH150RNBJFP/SET

4 x pressed steel castors with a top plate fixing fitted with a blue 65 shore A elastic rubber tyre on a black nylon centred wheel with ball bearings. Wheel diameter 150mm, tread width 40mm, overall height 204mm, top plate 135mm x 110mm, hole centres 105mm x 80mm. Load capacity 300kg per castor, 900kg load capacity per set.



Bearing Type	Ball
Castor Type	Fixed, Swivel, Swivel with Total Lock Brake
Colour / Shore Hardness	Blue Elastic Rubber on Nylon Rim / 65 Shore A
Configuration	2 x Fixed + 2 x Braked, 2 x Swivel + 2 x Braked, 2 x Swivel + 2 x Fixed
Diameter (mm)	150
Fixing Option	Plate
Fork Thickness (mm)	5
Height (mm)	204
Hole Centres (mm)	105 x 80
Load Capacity (kg)	900 Per Set
Swivel Radius (mm)	128 Swivel / 164 Braked
Temperature Resistance	-30 °C TO +80 °C
To Suit Fixing Bolt (mm)	10
Top Plate Thickness (mm)	19
Tread (mm)	40
Wheel Material	Rubber on Nylon
Plate Size (mm)	84 x 72

BIL GROUP LTD

Porte Marsh Road, Calne, Wiltshire, SN11 9BW

Registered in England No: 2603821

VAT Reg: GB572705729

