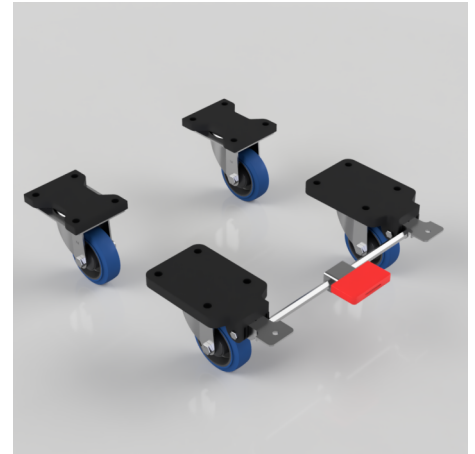


4 Pack Blue Rubber Plate Roller Bearing 100mm 750kg Load Per Set - various configurations

Product code: BZEH100SRNBFP/SET

4 x pressed steel castors with flat top plate fixing fitted with a blue 65 shore A elastic rubber tyre on black nylon centre with roller bearing. Wheel diameter 100mm, tread width 36mm, overall height 144mm, top plate 135mm x 105mm, hole centres 105mm x 80mm Load capacity 250kg per castor, 750kg load capacity per set.



Bearing Type	Roller
Castor Type	Fixed, Swivel, Swivel with Total Lock Brake
Colour / Shore Hardness	Blue Elastic Rubber on Nylon Rim / 65 Shore A
Configuration	2 x Fixed + 2 x Braked, 2 x Swivel + 2 x Braked, 2 x Swivel + 2 x Fixed
Diameter (mm)	100
Fixing Option	Plate
Fork Thickness (mm)	3
Height (mm)	144
Hole Centres (mm)	105 x 80
Load Capacity (kg)	750 per set
Swivel Radius (mm)	90 Swivel / 164 Braked
Temperature Resistance	-20 °C TO +60 °C
To Suit Fixing Bolt (mm)	10
Top Plate Thickness (mm)	18
Tread (mm)	36
Wheel Material	Rubber on Nylon
Plate Size (mm)	84 x 72

BIL GROUP LTD

Porte Marsh Road, Calne, Wiltshire, SN11 9BW

Registered in England No: 2603821

VAT Reg: GB572705729

