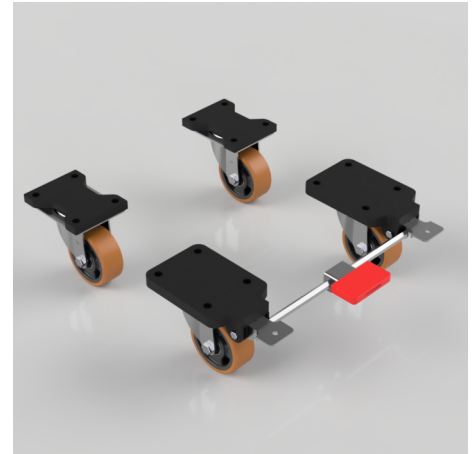


## 4 Pack Brown Polyurethane Plate Ball Bearing 160mm 1800kg Load Per Set - various configurations

**Product code: BZSPH160XPNBJFP/SET**

4 x pressed steel castors with a top plate fixing fitted with a brown polyurethane tyre black nylon centred wheel with ball bearings. Wheel diameter 160mm, tread width 50mm, overall height 209mm, top plate 135mm x 110mm, hole centres 105mm x 80mm. Load capacity 600kg per castor, 1800kg load capacity per set.



Bearing Type	Ball
Castor Type	Fixed, Swivel, Swivel with Total Lock Brake
Colour / Shore Hardness	Brown Polyurethane on Nylon Rim / 96 Shore A
Configuration	2 x Fixed + 2 x Braked, 2 x Swivel + 2 x Braked, 2 x Swivel + 2 x Fixed
Diameter (mm)	160
Fixing Option	Plate
Fork Thickness (mm)	5
Height (mm)	209
Hole Centres (mm)	105 x 80
Load Capacity (kg)	1800 Per Set
Swivel Radius (mm)	128 Swivel / 164 Braked
Temperature Resistance	-20 °C TO +60 °C
To Suit Fixing Bolt (mm)	10
Top Plate Thickness (mm)	19
Tread (mm)	50
Wheel Material	Polyurethane on Nylon
Plate Size (mm)	84 x 72