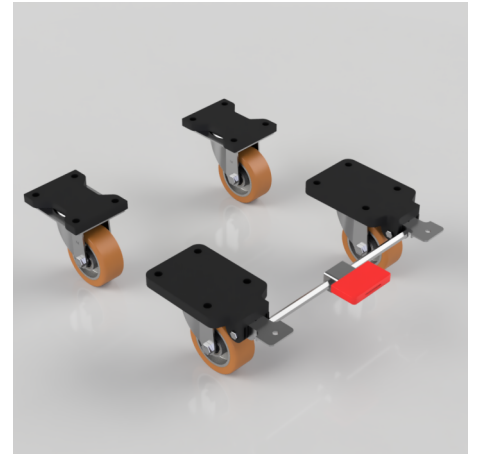


4 Pack Cast Iron Plate Ball Bearing 125mm 750kg Load Per Set

Product code: BZEH80PTBJFP/SB/SET

2 x Swivel and 2 x Braked pressed steel castors with a top plate fixing fitted with a polyurethane tyre wheel on cast iron centre with ball bearings and a fixed position total lock brake. Wheel diameter 80mm, tread width 36mm, overall height 125mm, top plate 180mm x 115mm, hole centres 105mm x 80mm. Load capacity 250kg per castor, 750kg load capacity per set.



Bearing Type	Ball
Castor Type	Swivel, Swivel with Total Lock Brake
Colour / Shore Hardness	Brown Polyurethane on Cast Iron Rim / 94 Shore A
Diameter (mm)	80
Fixing Option	Plate
Fork Thickness (mm)	4
Height (mm)	125
Hole Centres (mm)	105 x 80
Load Capacity (kg)	750 per set
Temperature Resistance	"-20 °C TO +80 °C
To Suit Fixing Bolt (mm)	10
Top Plate Thickness (mm)	18
Tread (mm)	36
Wheel Material	Polyurethane on Cast Iron
Plate Size (mm)	135 x 105

BIL GROUP LTD

Porte Marsh Road, Calne, Wiltshire, SN11 9BW

Registered in England No: 2603821

VAT Reg: GB572705729

