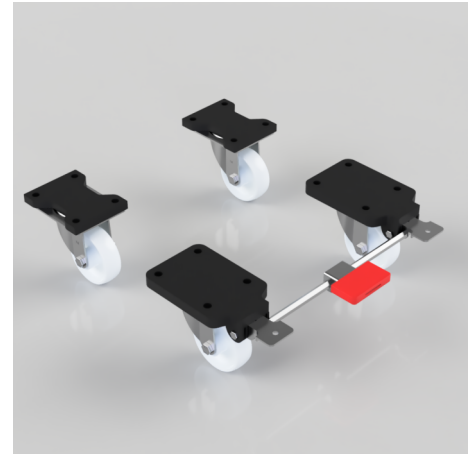


4 Pack White Nylon Plate Roller Bearing 125mm 900kg Load Per Set - various configurations

Product code: BZEH125NYBFP/SET

4 x pressed steel castors with a top plate fixing fitted with a white nylon wheel with a roller bearing. Wheel diameter 125mm, tread width 35mm, overall height 170mm, top plate 135mm x 105mm, hole centres 105mm x 80mm Load capacity 300kg per castor, 900kg load capacity per set.



Bearing Type	Roller
Castor Type	Fixed, Swivel, Swivel with Total Lock Brake
Colour / Shore Hardness	White Nylon
Configuration	2 x Fixed + 2 x Braked, 2 x Swivel + 2 x Braked, 2 x Swivel + 2 x Fixed
Diameter (mm)	125
Fixing Option	Plate
Fork Thickness (mm)	3
Height (mm)	170
Hole Centres (mm)	105 x 80
Load Capacity (kg)	900 Per Set
Swivel Radius (mm)	106 Swivel / 164 Braked
Temperature Resistance	-30 °C TO +80 °C
To Suit Fixing Bolt (mm)	10
Top Plate Thickness (mm)	18
Tread (mm)	35
Wheel Material	Nylon
Plate Size (mm)	84 x 72

BIL GROUP LTD

Porte Marsh Road, Calne, Wiltshire, SN11 9BW

Registered in England No: 2603821

VAT Reg: GB572705729

