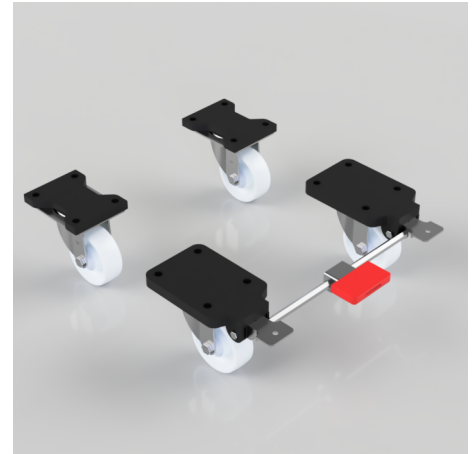


## 4 Pack White Nylon Plate Roller Bearing 150mm 2100kg Load Per Set - various configurations

**Product code: BZSPH150NYBFP/SET**

4 x pressed steel castors with a top plate fixing fitted with a white nylon wheel with roller bearings. Wheel diameter 150mm, tread width 45mm, overall height 204mm, top plate 135mm x 110mm, hole centres 105mm x 80mm Load capacity 700kg per castor, 2100kg load capacity per set.



Bearing Type	Roller
Castor Type	Fixed, Swivel, Swivel with Total Lock Brake
Colour / Shore Hardness	White Nylon
Configuration	2 x Fixed + 2 x Braked, 2 x Swivel + 2 x Braked, 2 x Swivel + 2 x Fixed
Diameter (mm)	150
Fixing Option	Plate
Fork Thickness (mm)	5
Height (mm)	204
Hole Centres (mm)	105 x 80
Load Capacity (kg)	2100 per set
Swivel Radius (mm)	128 Swivel / 164 Braked
Temperature Resistance	-30 °C TO +80 °C
To Suit Fixing Bolt (mm)	10
Top Plate Thickness (mm)	19
Tread (mm)	45
Wheel Material	Nylon
Plate Size (mm)	84 x 72