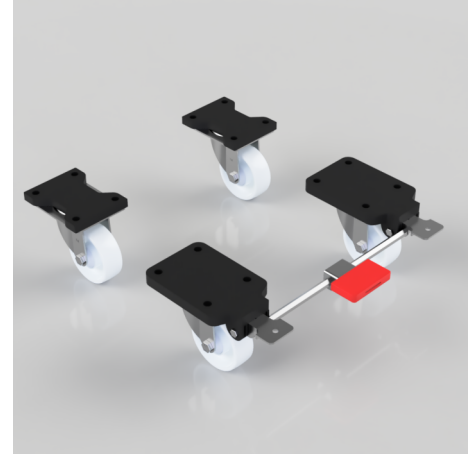


## 4 Pack White Nylon Plate Roller Bearing 200mm 2100kg Load Per Set - various configurations

**Product code: BZSPH200NYBFP/SET**

4 x pressed steel castors with a top plate fixing fitted with a white nylon wheel with roller bearings. Wheel diameter 200mm, tread width 50mm, overall height 252mm, top plate 135mm x 110mm, hole centres 105mm x 80mm Load capacity 700kg per castor, 2100kg load capacity per set.



|                          |   |
|--------------------------|---|
| Bearing Type             | Roller  |
| Castor Type              | Fixed, Swivel, Swivel with Total Lock Brake                             |
| Colour / Shore Hardness  | White Nylon   |
| Configuration            | 2 x Fixed + 2 x Braked, 2 x Swivel + 2 x Braked, 2 x Swivel + 2 x Fixed |
| Diameter (mm)            | 200   |
| Fixing Option            | Plate   |
| Fork Thickness (mm)      | 5   |
| Height (mm)              | 248   |
| Hole Centres (mm)        | 105 x 80  |
| Load Capacity (kg)       | 2100 per set  |
| Swivel Radius (mm)       | 153 Swivel / 164 Braked   |
| Temperature Resistance   | -30 °C TO +80 °C  |
| To Suit Fixing Bolt (mm) | 10  |
| Top Plate Thickness (mm) | 19  |
| Tread (mm)               | 50  |
| Wheel Material           | Nylon   |
| Plate Size (mm)          | 84 x 72   |

### BIL GROUP LTD

Porte Marsh Road, Calne, Wiltshire, SN11 9BW

Registered in England No: 2603821

VAT Reg: GB572705729

