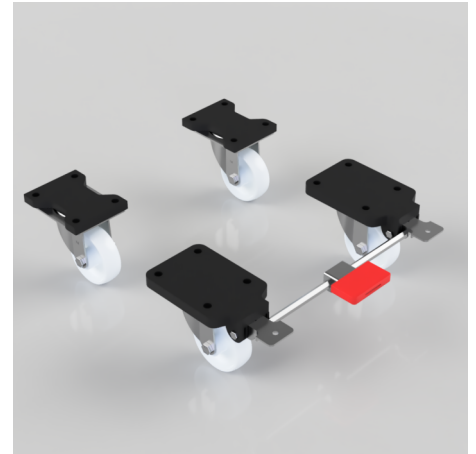


4 Pack White Nylon Plate Swivel Brake Ball Bearing 80mm 600kg Load Per Set

Product code: BZEH80NYBJFP/SB/SET

2 x Swivel and 2 x Braked pressed steel castors with a top plate fixing fitted with a white nylon wheel with ball bearings, retaining cap/thread guard and a fixed position total lock brake. Wheel diameter 80mm, tread width 32mm, overall height 125mm, plate size 180mm x 115mm, hole centres 105mm x 80mm. Load capacity 200kg per castor, 600kg load capacity per set.



Bearing Type	Ball
Castor Type	Swivel, Swivel with Total Lock Brake
Colour / Shore Hardness	White Nylon
Diameter (mm)	80
Fixing Option	Plate
Fork Thickness (mm)	4
Height (mm)	125
Hole Centres (mm)	105 x 80
Load Capacity (kg)	600
Temperature Resistance	-30 °C TO +80 °C
To Suit Fixing Bolt (mm)	10
Top Plate Thickness (mm)	18
Tread (mm)	32
Wheel Material	Nylon
Plate Size (mm)	135 x 105

BIL GROUP LTD

Porte Marsh Road, Calne, Wiltshire, SN11 9BW

Registered in England No: 2603821

VAT Reg: GB572705729

