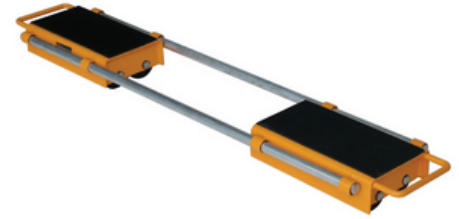


## Adjustable Skate 12tonne

**Product code: SKADSK12**



A laterally adjustable skate for moving heavy machinery & industrial equipment loads of up to 12tonne (12,000kg). Actually two skates in one, connected by two removable steel rods and adjustable from 500mm to 1400mm.

- Helps to protect the floor via the large diameter rollers
- Load slippage risk is reduced via the rubber non-slip pads
- Often used in combination with the 12tonne steerable skate [SKSTSK12](#) for a total load rating of 24tonne.
- Other load ratings available

|                        |                |
|------------------------|----------------|
| Load capacity          | 12000Kg        |
| Height                 | 105mm          |
| Width                  | 270mm          |
| Length                 | 420mm          |
| Weight                 | 38Kg           |
| Load plate area length | 345mm          |
| Load plate area width  | 190mm          |
| Number of rollers      | 12             |
| Roller type            | Nylon          |
| Bar length             | 1200mm         |
| Skate/jack type        | Machine skates |

## BIL GROUP LTD

Porte Marsh Road, Calne, Wiltshire, SN11 9BW

Registered in England No: 2603821

VAT Reg: GB572705729

