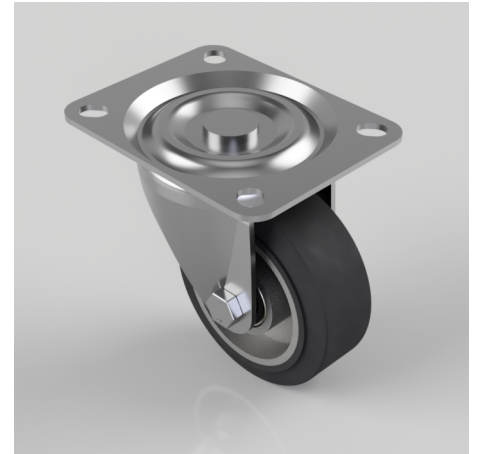


Black Elastic Rubber Plate Swivel Castor 100mm 200kg Load

Product code: BZH100ERBJLP

Pressed steel swivel castor with a top plate fixing fitted with a black high elastic natural 65 shore A rubber tyre aluminium centred wheel with ball bearings. Wheel diameter 100mm, tread width 40mm, overall height 127mm, top plate 130mm x 103mm, hole centres 105mm x 80mm or 100mm x 76mm Load capacity 200kg REACH compliant also PAH-Free rubber to confirm to EU-directive 2005/69/EC



Diameter (mm)	100
Castor Type	Swivel
Fixing Option	Plate
Height (mm)	127
Wheel Material	Rubber on Aluminium
Colour / Shore Hardness	Black Elastic Rubber on Aluminium Rim / 65 Shore A
Temperature Resistance	-30 °C TO +80 °C
Bearing Type	Ball
Load Capacity (kg)	200
Tread (mm)	40
Swivel Radius (mm)	77
Plate Size (mm)	128 x 102
Hole Centres (mm)	105/100 x 80/76
Top Plate Thickness (mm)	3
Fork Thickness (mm)	3
To Suit Fixing Bolt (mm)	10