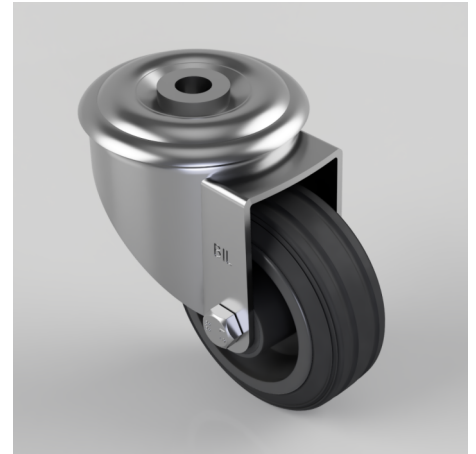


Black Rubber Bolt Hole Swivel Castor 80mm 50kg Load

Product code: BZMM80PSBBH12

Pressed steel swivel castor with 12mm bolt hole fixing fitted with a black rubber tyred black polypropylene centred wheel with roller bearing. Wheel diameter 80mm, tread width 31.5mm, overall height 105mm. Load capacity 50kg.



Diameter (mm)	80
Castor Type	Swivel
Fixing Option	Bolt Hole
Height (mm)	105
Wheel Material	Rubber on Polypropylene
Colour / Shore Hardness	Black Rubber on Polypropylene Rim / 85 Shore A
Temperature Resistance	-20 °C TO +60 °C
Bearing Type	Roller
Load Capacity (kg)	50
Tread (mm)	31.5
Swivel Radius (mm)	78
Head Dia (mm)	76
Fork Thickness (mm)	2.5
To Suit Fixing Bolt (mm)	12