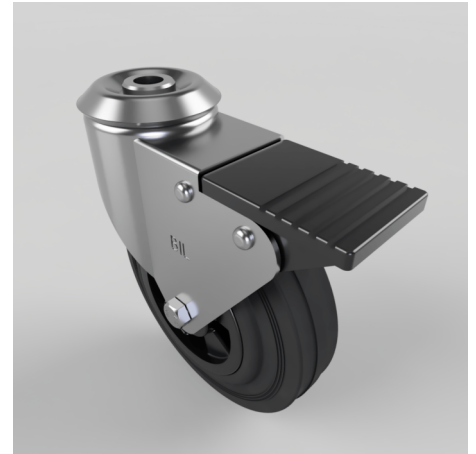


## Black Rubber Bolt Hole Swivel Castor Brake 125mm 90kg Load

**Product code: BZBC125PSBH12SWB**

Pressed steel swivel castor with a 12mm bolt hole fixing fitted with a black rubber tyre on black polypropylene centred wheel with a plain bore and swivel wheel brake. Wheel diameter 125mm, tread width 37.5mm overall height 154mm. Load capacity 90kg.



Diameter (mm)	125
Fixing Option	Bolt Hole
Castor Type	Swivel with Total Lock Brake
Head Dia (mm)	60
Height (mm)	154
Bearing Type	Plain
Swivel Radius (mm)	115
Wheel Material	Rubber on Polypropylene
Colour / Shore Hardness	Black Rubber on Polypropylene Rim / 85 Shore A
Fork Thickness (mm)	2
Temperature Resistance	-20 °C TO +60 °C
To Suit Fixing Bolt (mm)	12
Tread (mm)	37.5
Load Capacity (kg)	90

### BIL GROUP LTD

Porte Marsh Road, Calne, Wiltshire, SN11 9BW

Registered in England No: 2603821

VAT Reg: GB572705729

