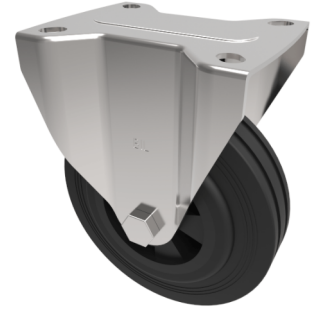


Black Rubber Plate Fixed Castor 125mm 90kg Load

Product code: BZMMF125PSB

Pressed steel fixed castor with a top plate fixing fitted with a black rubber tyred polypropylene centred wheel with roller bearing. Wheel diameter 125mm, tread width 37.5mm, overall height 155mm, top plate 105mm x 85mm, hole centres 80mm x 60mm. load capacity 90kg.



Diameter (mm)	125
Castor Type	Fixed
Fixing Option	Plate
Height (mm)	155
Wheel Material	Rubber on Polypropylene
Colour / Shore Hardness	Black Rubber on Polypropylene Rim / 85 Shore A
Temperature Resistance	-20 °C TO +60 °C
Bearing Type	Roller
Load Capacity (kg)	90
Tread (mm)	37.5
Plate Size (mm)	105 X 85
Hole Centres (mm)	80 X 60
Top Plate Thickness (mm)	2
Fork Thickness (mm)	2
To Suit Fixing Bolt (mm)	8

BIL GROUP LTD

Porte Marsh Road, Calne, Wiltshire, SN11 9BW

Registered in England No: 2603821

VAT Reg: GB572705729

