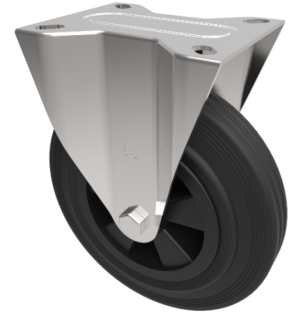


Black Rubber Plate Fixed Castor 200mm 205kg Load

Product code: BZMMF200PS



Pressed steel fixed castor with a top plate fixing fitted with a black rubber tyred black polypropylene centre with a plain bore. Wheel diameter 200mm, tread width 50mm, overall height 235mm, top plate 140mm x 110mm, hole centres 105mm x 80/75mm. Load capacity 205kg

Diameter (mm)	200
Castor Type	Fixed
Fixing Option	Plate
Height (mm)	235
Wheel Material	Rubber on Polypropylene
Colour / Shore Hardness	Black Rubber on Polypropylene Rim / 85 Shore A
Temperature Resistance	-20 °C TO +60 °C
Bearing Type	Plain
Load Capacity (kg)	205
Tread (mm)	50
Plate Size (mm)	135 x 110
Hole Centres (mm)	105 x 80
Top Plate Thickness (mm)	3
Fork Thickness (mm)	3
To Suit Fixing Bolt (mm)	10