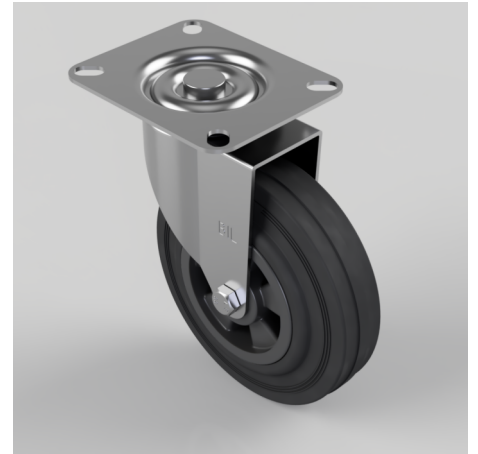


Black Rubber Plate Swivel Castor 125mm 90kg Load

Product code: BZBC125PS

Pressed steel swivel castor with top plate fixing fitted with a black rubber tyre on black polypropylene centred wheel with a plain bore. Wheel diameter 125mm, tread width 37.5mm, overall height 154mm, plate size 102mm x 84mm, hole centres 80mm x 60mm. Load capacity 90kg.



Diameter (mm)	125
Fixing Option	Plate
Castor Type	Swivel
Plate Size (mm)	102 x 84
Hole Centres (mm)	80 X 60
Height (mm)	154
Bearing Type	Plain
Swivel Radius (mm)	100
Wheel Material	Rubber on Polypropylene
Colour / Shore Hardness	Black Rubber on Polypropylene Rim / 85 Shore A
Top Plate Thickness (mm)	2
Fork Thickness (mm)	2
Temperature Resistance	-20 °C TO +60 °C
To Suit Fixing Bolt (mm)	8
Tread (mm)	37.5
Load Capacity (kg)	90

BIL GROUP LTD

Porte Marsh Road, Calne, Wiltshire, SN11 9BW

Registered in England No: 2603821

VAT Reg: GB572705729

