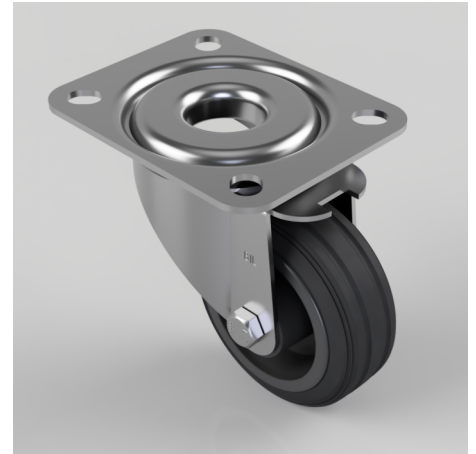


Black Rubber Plate Swivel Castor 80mm 50kg Load

Product code: BZMM80PSB

Pressed steel swivel castor with top plate fixing fitted with a black solid rubber tyred polypropylene centred wheel with roller bearings. Wheel diameter 80mm, tread width 29mm, overall height 105mm, top plate 105mm x 85mm, hole centres 80mm x 60mm. Load capacity 50kg.



| | |
|--------------------------|------------------------------------------------|
| Diameter (mm) | 80 |
| Castor Type | Swivel |
| Fixing Option | Plate |
| Height (mm) | 105 |
| Wheel Material | Rubber on Polypropylene |
| Colour / Shore Hardness | Black Rubber on Polypropylene Rim / 85 Shore A |
| Temperature Resistance | -20 °C TO +60 °C |
| Bearing Type | Roller |
| Load Capacity (kg) | 50 |
| Tread (mm) | 29 |
| Swivel Radius (mm) | 74 |
| Plate Size (mm) | 105 X 85 |
| Hole Centres (mm) | 80 X 60 |
| Top Plate Thickness (mm) | 2.5 |
| Fork Thickness (mm) | 2 |
| To Suit Fixing Bolt (mm) | 8 |

BIL GROUP LTD

Porte Marsh Road, Calne, Wiltshire, SN11 9BW

Registered in England No: 2603821

VAT Reg: GB572705729

