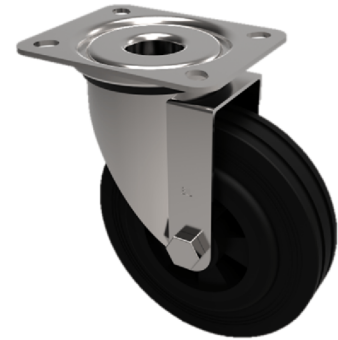


## Black Rubber Plate Swivel Castor 80mm 50kg Load

**Product code: SSMM80PS**



Grade 304 Pressed stainless steel swivel castor with a top plate fixing fitted with a black rubber tyre on black polypropylene centre with a plain bore. Wheel diameter 80mm, tread width 25mm overall height 105mm top plate 105mm x 85mm, hole centres 80mm x 60mm. Load capacity 50kg.

Diameter (mm)	80
Fixing Option	Plate
Castor Type	Swivel
Height (mm)	105
Wheel Material	Rubber on Polypropylene
Colour / Shore Hardness	Black Rubber on Polypropylene Rim / 85 Shore A
Bearing Type	Plain
Tread (mm)	29
Fork Thickness (mm)	2
To Suit Fixing Bolt (mm)	8
Load Capacity (kg)	50
Temperature Resistance	-20 °C TO +60 °C
Plate Size (mm)	105 X 85
Hole Centres (mm)	80 X 60
Top Plate Thickness (mm)	2
Swivel Radius (mm)	74

### BIL GROUP LTD

Porte Marsh Road, Calne, Wiltshire, SN11 9BW

Registered in England No: 2603821

VAT Reg: GB572705729

