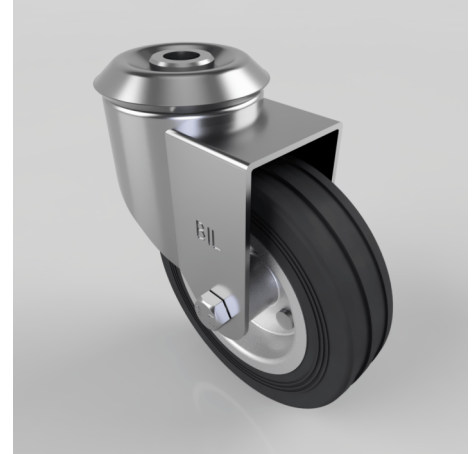


Black Rubber Pressed Steel Bolt Hole Swivel Castor 100mm 70kg Load

Product code: BZBC100BSBBH12

Pressed steel swivel castor with a 12mm bolt hole fixing fitted with a black rubber tyred wheel on a steel disc centre fitted with roller bearings. Wheel diameter 100mm, tread width 27mm, overall height 126mm. Load capacity 70kg.



| | |
|--------------------------|--|
| Bearing Type | Roller |
| Castor Type | Swivel |
| Colour / Shore Hardness | Black Rubber on Steel Rim / 85 Shore A |
| Diameter (mm) | 100 |
| Fixing Option | Bolt Hole |
| Fork Thickness (mm) | 2 |
| Head Dia (mm) | 60 |
| Height (mm) | 126 |
| Load Capacity (kg) | 70 |
| Swivel Radius (mm) | 88 |
| Temperature Resistance | -20 °C TO +60 °C |
| To Suit Fixing Bolt (mm) | 12 |
| Tread (mm) | 27 |
| Wheel Material | Rubber on Steel |