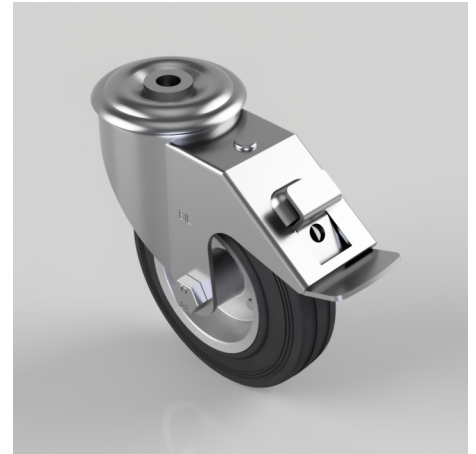


Black Rubber Pressed Steel Bolt Hole Swivel Castor 125mm 90kg Load

Product code: BZMM125BSBBH12SW

Pressed steel swivel castor with a 12mm bolt hole fixing fitted with a black rubber tyre steel disc centres wheel with a roller bearing and total lock brake. Wheel diameter 125mm, tread width 35mm, overall height 155mm. Load capacity 90kg. (Catalogue SKU BZMM125BSBBH12SWB)



| | |
|--------------------------|--|
| Diameter (mm) | 125 |
| Castor Type | Swivel |
| Fixing Option | Bolt Hole |
| Height (mm) | 155 |
| Wheel Material | Rubber on Steel |
| Colour / Shore Hardness | Black Rubber on Steel Rim / 85 Shore A |
| Temperature Resistance | -20 °C TO +60 °C |
| Bearing Type | Roller |
| Load Capacity (kg) | 90 |
| Tread (mm) | 35 |
| Swivel Radius (mm) | 134 |
| Head Dia (mm) | 76 |
| Fork Thickness (mm) | 2.5 |
| To Suit Fixing Bolt (mm) | 12 |