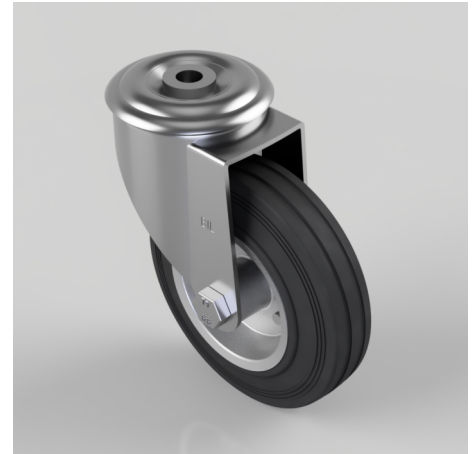


## Black Rubber Pressed Steel Bolt Hole Swivel Castor 125mm 90kg Load

**Product code: BZMM125BSBBH12**

Pressed steel swivel castor with a 12mm bolt hole fixing fitted with a black rubber tyre steel disc centres wheel with a roller bearing. Wheel diameter 125mm, tread width 35mm, overall height 155mm. Load capacity 90kg.



Diameter (mm)	125
Castor Type	Swivel
Fixing Option	Bolt Hole
Height (mm)	155
Wheel Material	Rubber on Steel
Colour / Shore Hardness	Black Rubber on Steel Rim / 85 Shore A
Temperature Resistance	-20 °C TO +60 °C
Bearing Type	Roller
Load Capacity (kg)	90
Tread (mm)	35
Swivel Radius (mm)	104
Head Dia (mm)	76
Fork Thickness (mm)	2.5
To Suit Fixing Bolt (mm)	12