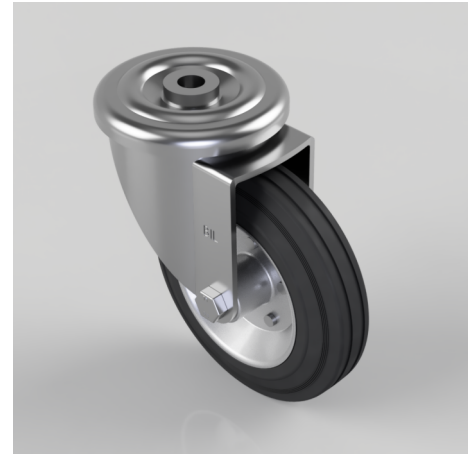


Black Rubber Pressed Steel Bolt Hole Swivel Castor 160mm 140kg Load

Product code: BZMM160BSBBH16

Pressed steel swivel castor with a 16mm bolt hole fitted with a black rubber tyre pressed steel centre wheel with a roller bearing. Wheel diameter 160mm, tread width 40mm, overall height 193mm, Load capacity 160kg.



Diameter (mm)	160
Castor Type	Swivel
Fixing Option	Bolt Hole
Height (mm)	193
Wheel Material	Rubber on Steel
Colour / Shore Hardness	Black Rubber on Steel Rim / 85 Shore A
Temperature Resistance	-20 °C TO +60 °C
Bearing Type	Roller
Load Capacity (kg)	160
Tread (mm)	40
Swivel Radius (mm)	133
Head Dia (mm)	114
Fork Thickness (mm)	4
To Suit Fixing Bolt (mm)	16