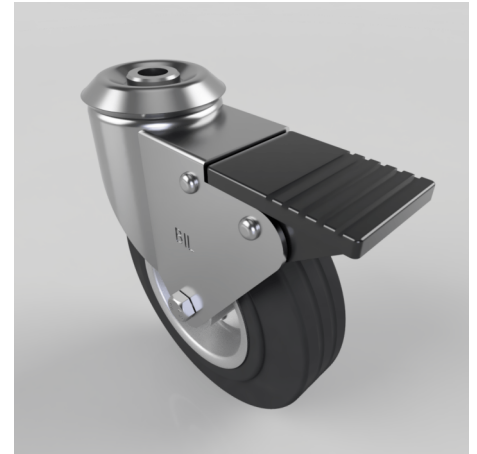


Black Rubber Pressed Steel Bolt Hole Swivel Castor Brake 100mm 70kg

Product code: BZBC125BSBBH12SWB

Pressed steel swivel castor with a 12mm bolt hole fitted with a black rubber tyre on steel dic centre with a roller bearing and a total lock brake. Wheel diameter 125mm, tread width 37.5mm, overall height 154mm, Load capacity 90kg.



Diameter (mm)	125
Fixing Option	Bolt Hole
Castor Type	Swivel with Total Lock Brake
Head Dia (mm)	60
Height (mm)	154
Bearing Type	Roller
Swivel Radius (mm)	115
Wheel Material	Rubber on Steel
Colour / Shore Hardness	Black Rubber on Steel Rim / 85 Shore A
Fork Thickness (mm)	2
Temperature Resistance	-20 °C TO +60 °C
To Suit Fixing Bolt (mm)	12
Tread (mm)	37.5
Load Capacity (kg)	90