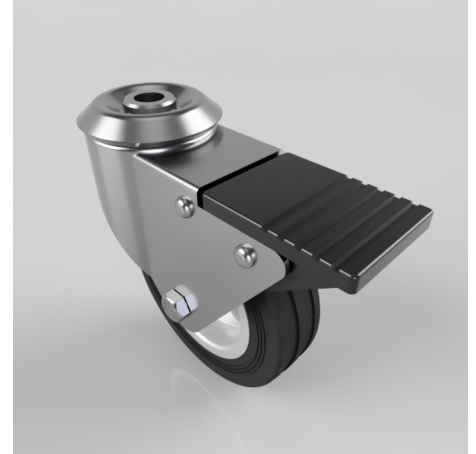


Black Rubber Pressed Steel Bolt Hole Swivel Castor Brake 100mm 70kg

Product code: BZBC100BSBBH12SWB

Pressed steel swivel castor with a 12mm bolt hole fixing fitted with a black rubber tyred wheel on a steel disc centre fitted with roller bearings and a total lock brake. Wheel diameter 100mm, tread width 27mm, overall height 126mm. Load capacity 70kg.



Diameter (mm)	100
Fixing Option	Bolt Hole
Castor Type	Swivel with Total Lock Brake
Head Dia (mm)	60
Height (mm)	126
Bearing Type	Roller
Swivel Radius (mm)	115
Wheel Material	Rubber on Steel
Colour / Shore Hardness	Black Rubber on Steel Rim / 85 Shore A
Fork Thickness (mm)	2
Temperature Resistance	-20 °C TO +60 °C
To Suit Fixing Bolt (mm)	12
Tread (mm)	27
Load Capacity (kg)	70