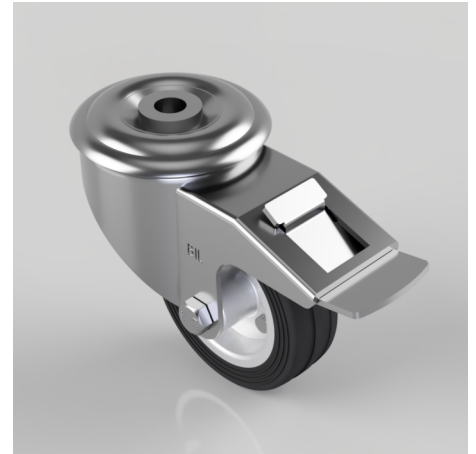


## Black Rubber Pressed Steel Bolt Hole Swivel Castor Brake 80mm 50kg

**Product code: BZMM80BSBBH12SWB**

Pressed steel swivel castor with a 12mm bolt hole fixing fitted with a black rubber wheel on a steel disc centre with roller bearing and total lock brake. Wheel diameter 80mm, tread width 25mm, overall height 105mm. Load capacity 50kg.



Diameter (mm)	80
Castor Type	Swivel with Total Lock Brake
Fixing Option	Bolt Hole
Height (mm)	105
Wheel Material	Rubber on Steel
Colour / Shore Hardness	Black Rubber on Steel Rim / 85 Shore A
Temperature Resistance	-20 °C TO +60 °C
Bearing Type	Roller
Load Capacity (kg)	50
Tread (mm)	25
Swivel Radius (mm)	112
Head Dia (mm)	76
Fork Thickness (mm)	2.5
To Suit Fixing Bolt (mm)	12