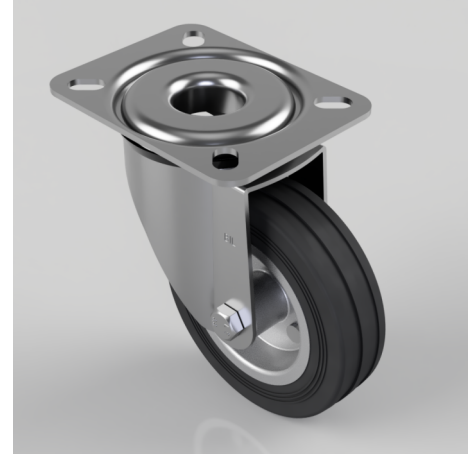


Black Rubber Pressed Steel Plate Swivel Castor 100mm 70kg Load

Product code: BZRMM100BSB

Pressed steel swivel castor with top plate fixing fitted with a black rubber tyre on steel disc centred wheel with roller bearing. Wheel diameter 100mm, tread width 26mm, overall height 128mm, top plate 105mm x 85mm, hole centre 80/72mm x 60/52mm. Load capacity 70kg.



| | |
|--------------------------|--|
| Diameter (mm) | 100 |
| Castor Type | Swivel |
| Fixing Option | Plate |
| Height (mm) | 128 |
| Wheel Material | Rubber on Steel |
| Colour / Shore Hardness | Black Rubber on Steel Rim / 85 Shore A |
| Temperature Resistance | -20 °C TO +60 °C |
| Bearing Type | Roller |
| Load Capacity (kg) | 70 |
| Tread (mm) | 26 |
| Swivel Radius (mm) | 84 |
| Plate Size (mm) | 104 x 80 |
| Hole Centres (mm) | 80/72 x 60/52 |
| Top Plate Thickness (mm) | 2.5 |
| Fork Thickness (mm) | 2 |
| To Suit Fixing Bolt (mm) | 8 |

BIL GROUP LTD

Porte Marsh Road, Calne, Wiltshire, SN11 9BW

Registered in England No: 2603821

VAT Reg: GB572705729

