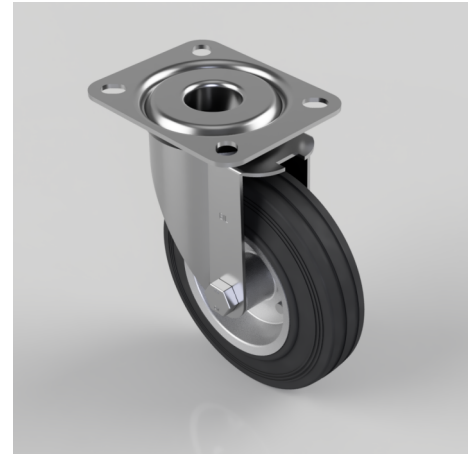


Black Rubber Pressed Steel Plate Swivel Castor 125mm 90kg Load

Product code: BZMM125BSB

Pressed steel swivel castor with top plate fixing fitted with black rubber tyre on steel disc centre with roller bearing. Wheel diameter 125mm, tread width 35mm, overall height 155mm, plate size 105mm x 85mm, hole centres 80mm x 60mm. Load capacity 90kg.



Diameter (mm)	125
Castor Type	Swivel
Fixing Option	Plate
Height (mm)	155
Wheel Material	Rubber on Steel
Colour / Shore Hardness	Black Rubber on Steel Rim / 85 Shore A
Temperature Resistance	-20 °C TO +60 °C
Bearing Type	Roller
Load Capacity (kg)	90
Tread (mm)	35
Swivel Radius (mm)	95
Plate Size (mm)	105 X 85
Hole Centres (mm)	80 X 60
Top Plate Thickness (mm)	2.5
Fork Thickness (mm)	2
To Suit Fixing Bolt (mm)	8

BIL GROUP LTD

Porte Marsh Road, Calne, Wiltshire, SN11 9BW

Registered in England No: 2603821

VAT Reg: GB572705729

