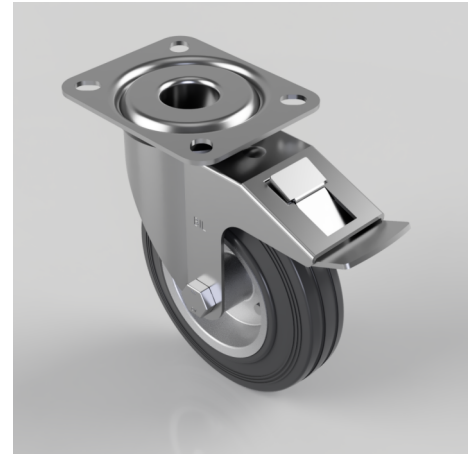


Black Rubber Pressed Steel Plate Swivel Castor Brake 125mm 90kg Load

Product code: BZMM125BSBSWB

Pressed steel swivel castor with top plate fixing fitted with a black rubber tyre on steel disc centred wheel with roller bearing and swivel wheel brake. Wheel diameter 125mm, tread width 35mm, overall height 155mm, plate size 105mm x 85mm, hole centres 80mm x 60mm. Load capacity 90kg



Diameter (mm)	125
Castor Type	Swivel with Total Lock Brake
Fixing Option	Plate
Height (mm)	155
Wheel Material	Rubber on Steel
Colour / Shore Hardness	Black Rubber on Steel Rim / 85 Shore A
Temperature Resistance	-20 °C TO +60 °C
Bearing Type	Roller
Load Capacity (kg)	90
Tread (mm)	35
Swivel Radius (mm)	123
Plate Size (mm)	105 X 85
Hole Centres (mm)	80 X 60
Top Plate Thickness (mm)	2.5
Fork Thickness (mm)	2
To Suit Fixing Bolt (mm)	8

BIL GROUP LTD

Porte Marsh Road, Calne, Wiltshire, SN11 9BW

Registered in England No: 2603821

VAT Reg: GB572705729

