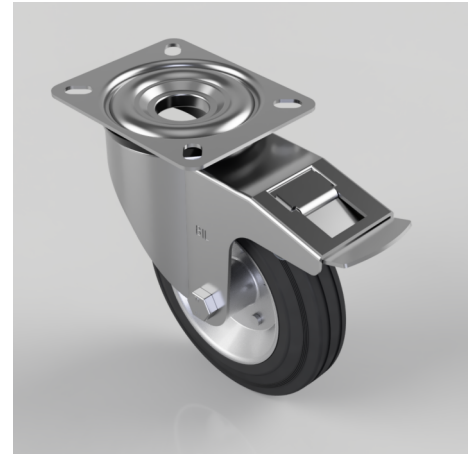


Black Rubber Pressed Steel Plate Swivel Castor Brake 160mm 140kg Load

Product code: BZMM160BSBSWB

Pressed steel swivel castor with a top plate fixing fitted with a black rubber tyre pressed steel centre wheel with a roller bearing and total lock brake. Wheel diameter 160mm, tread width 40mm, overall height 195mm, top plate 140mm x 110mm, hole centres 105mm x 80mm. Load capacity 160kg.



Diameter (mm)	160
Castor Type	Swivel with Total Lock Brake
Fixing Option	Plate
Height (mm)	195
Wheel Material	Rubber on Steel
Colour / Shore Hardness	Black Rubber on Steel Rim / 85 Shore A
Temperature Resistance	-20 °C TO +60 °C
Bearing Type	Roller
Load Capacity (kg)	140
Tread (mm)	40
Swivel Radius (mm)	167
Plate Size (mm)	135 x 110
Hole Centres (mm)	105 x 80
Top Plate Thickness (mm)	2.5
Fork Thickness (mm)	2.5
To Suit Fixing Bolt (mm)	10