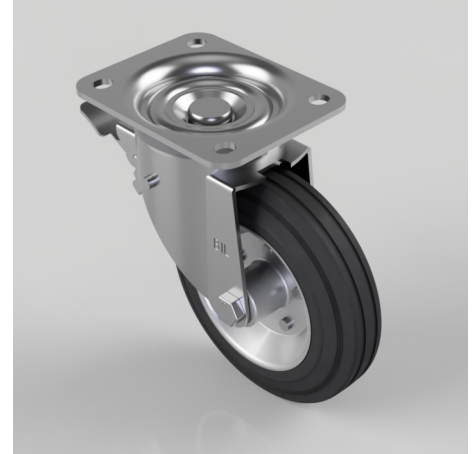


Black Rubber Pressed Steel Plate Swivel Castor Brake 160mm 160kg Load

Product code: BZWB160BSBSWB

Pressed steel swivel castor with a top plate fixing fitted with a Black rubber tyre on steel disc centre with a roller bearing and total lock brake. Wheel diameter 160mm, tread width 40mm, overall height 195mm, plate size 135mm x 110mm, hole centres 105mm x 80/75mm. Load capacity 160kg.



Diameter (mm)	160
Castor Type	Swivel with Total Lock Brake
Fixing Option	Plate
Height (mm)	195
Wheel Material	Rubber on Steel
Colour / Shore Hardness	Black Rubber on Steel Rim / 85 Shore A
Temperature Resistance	-20 °C TO +60 °C
Bearing Type	Roller
Load Capacity (kg)	160
Tread (mm)	40
Swivel Radius (mm)	133
Plate Size (mm)	135 x 110
Hole Centres (mm)	105 x 80/75
Top Plate Thickness (mm)	4
Fork Thickness (mm)	3
Brake Type	Leading Brake
To Suit Fixing Bolt (mm)	10