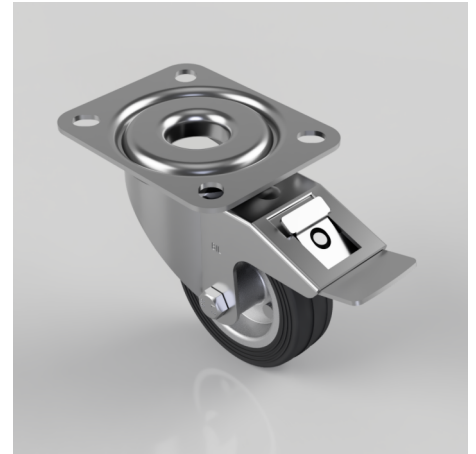


## Black Rubber Pressed Steel Plate Swivel Castor Brake 80mm 50kg Load

**Product code: BZMM80BSBSWB**

Pressed steel swivel castor with a top plate fixing fitted with a black rubber tyre on steel disc centre with roller bearing with a total lock brake. Wheel diameter 80mm, tread width 24mm, overall height 105mm, top plate 105mm x 85mm, hole centres 80mm x 60mm. Load capacity 50kg.



Diameter (mm)	80
Castor Type	Swivel with Total Lock Brake
Fixing Option	Plate
Height (mm)	105
Wheel Material	Rubber on Steel
Colour / Shore Hardness	Black Rubber on Steel Rim / 85 Shore A
Temperature Resistance	-20 °C TO +60 °C
Bearing Type	Roller
Load Capacity (kg)	50
Tread (mm)	24
Swivel Radius (mm)	111
Plate Size (mm)	105 X 85
Hole Centres (mm)	80 X 60
Top Plate Thickness (mm)	2.5
Fork Thickness (mm)	2
To Suit Fixing Bolt (mm)	8

### BIL GROUP LTD

Porte Marsh Road, Calne, Wiltshire, SN11 9BW

Registered in England No: 2603821

VAT Reg: GB572705729

