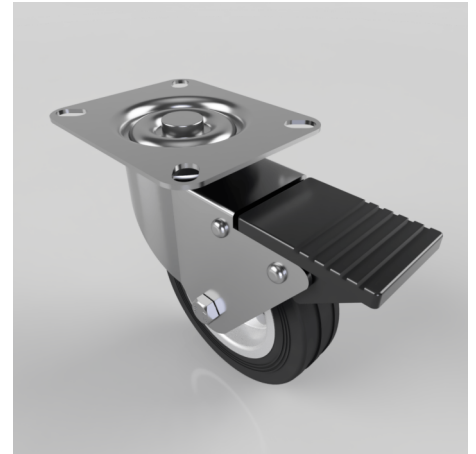


Black Rubber Steel Plate Brake 100mm 70kg Load

Product code: BZBC100BSBSWB

Pressed steel swivel castor with a brake fitted with a top plate and a black rubber tyre with a steel disc centre and roller bearings. Wheel diameter 100mm, tread width 27mm, overall height 126mm, top plate 102x84mm with hole centres of 80x60 and a load capacity of 70kgs.



Diameter (mm)	100
Fixing Option	Plate
Castor Type	Swivel with Total Lock Brake
Plate Size (mm)	102 x 84
Hole Centres (mm)	80 X 60
Height (mm)	126
Bearing Type	Roller
Swivel Radius (mm)	115
Wheel Material	Rubber on Steel
Colour / Shore Hardness	Black Rubber on Steel Rim / 85 Shore A
Top Plate Thickness (mm)	2
Fork Thickness (mm)	2
Temperature Resistance	-20 °C TO +60 °C
To Suit Fixing Bolt (mm)	8
Tread (mm)	27
Load Capacity (kg)	70

BIL GROUP LTD

Porte Marsh Road, Calne, Wiltshire, SN11 9BW

Registered in England No: 2603821

VAT Reg: GB572705729

