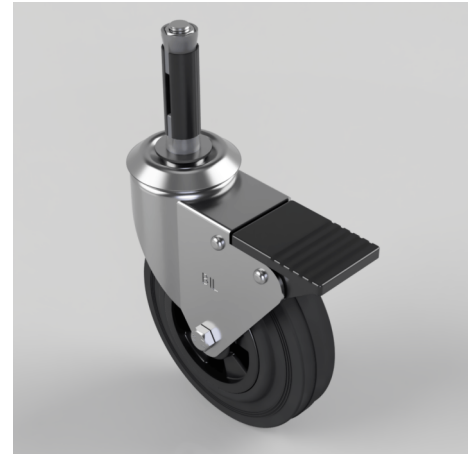


## Black Rubber Swivel Braked Expander 125mm 90kg

**Product code: BZBC125PSSWBEXR18**

Pressed steel swivel castor fitted with a 18.5mm to 21mm round expander and a black polypropylene wheel with a roller bearing bearing and total lock brake. Wheel diameter 125mm, tread width 37.5mm, overall height 126mm, Load capacity 90kg.



Height (mm)	154
Tread (mm)	37.5
Bearing Type	Plain
Diameter (mm)	125
Wheel Material	Rubber on Polypropylene
Fixing Option	Bolt Hole, Expander
Castor Type	Swivel with Total Lock Brake
Load Capacity (kg)	90
Swivel Radius (mm)	115
Expander Type (mm)	Round Expander to Suit 18.5 - 21
Fork Thickness (mm)	2
Head Dia (mm)	60
Colour / Shore Hardness	Black Rubber on Polypropylene Rim / 85 Shore A
Temperature Resistance	-20 °C TO +60 °C