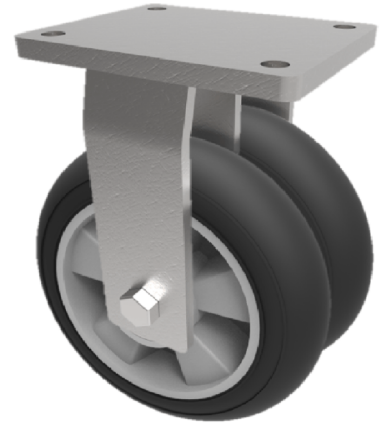


## Black Soft Elastic Rubber on Aluminium Plate Fixed Castor 250mm 1000kg Load

**Product code: 2BZQF250SRERBJ**

Fabricated fixed castor with a flat plate fixing fitted with 2 x black high elastic natural 55 shore A round profile rubber tyred on an aluminium centred wheels with ball bearings. Wheel diameter 250mm, tread width 2 x 55mm, overall height 314mm, plate size 175mm x 140mm, hole centres 140mm x 105mm. Load capacity 1000kg at 4kph and 400kg at 10kph. REACH compliant also PAH-Free rubber to confirm to EU-directive 2005/69/EC \*\* FOR INTERNAL AND EXTERNAL TOWING USE \*\*



Diameter (mm)	250
Fixing Option	Plate
Castor Type	Fixed
Bearing Type	Ball
Plate Size (mm)	175 X 140
Hole Centres (mm)	140 X 105
Height (mm)	314
To Suit Fixing Bolt (mm)	14
Wheel Material	Rubber on Aluminium
Colour / Shore Hardness	Black Ergonomic Rubber on Aluminium Rim / 55 Shore A
Temperature Resistance	&quot;-30 °C TO +80 °C
Tread (mm)	2 x 50
Load Capacity (kg)	1000
Top Plate Thickness (mm)	12
Fork Thickness (mm)	8

### BIL GROUP LTD

Porte Marsh Road, Calne, Wiltshire, SN11 9BW

Registered in England No: 2603821

VAT Reg: GB572705729

