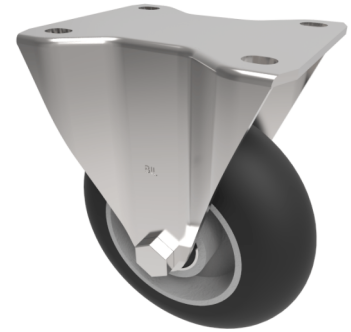


Black Soft Elastic Rubber Plate Fixed Castor 100mm 150kg Load

Product code: BZEHF100SRERBJLP

Pressed steel fixed castor with a top plate fixing with a black ergonomic high elastic natural 55 shore A round profile rubber tyred wheel with a aluminium centre with ball bearings. Wheel diameter 100mm, tread width 40mm, overall height 128mm, top plate 135mm x 110mm, hole centres 105mm x 80mm or 116mm x 92.5mm. Load capacity 150kg. REACH compliant also PAH-Free rubber to confirm to EU-directive 2005/69/EC,



| | |
|--------------------------|--|
| Diameter (mm) | 100 |
| Castor Type | Fixed |
| Fixing Option | Plate |
| Height (mm) | 128 |
| Wheel Material | Rubber on Aluminium |
| Colour / Shore Hardness | Black Ergonomic Rubber on Aluminium Rim / 55 Shore A |
| Temperature Resistance | -30 °C TO +80 °C |
| Bearing Type | Ball |
| Load Capacity (kg) | 150 |
| Tread (mm) | 40 |
| Plate Size (mm) | 135 x 110 |
| Hole Centres (mm) | 105/116 x 80/64 |
| Top Plate Thickness (mm) | 3 |
| Fork Thickness (mm) | 3 |
| To Suit Fixing Bolt (mm) | 10 |

BIL GROUP LTD

Porte Marsh Road, Calne, Wiltshire, SN11 9BW

Registered in England No: 2603821

VAT Reg: GB572705729

