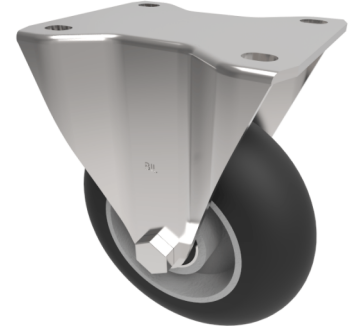


## Black Soft Elastic Rubber Plate Fixed Castor 125mm 200kg Load

**Product code: BZEHF125SRERBJLP**

Pressed steel fixed castor with a top plate fixing with a black ergonomic high elastic natural 55 shore A round profile rubber tyred wheel with a aluminium centre with ball bearings. Wheel diameter 100mm, tread width 40mm, overall height 128mm, top plate 135mm x 110mm, hole centres 105mm x 80mm or 116mm x 92.5mm. Load capacity 150kg. REACH compliant also PAH-Free rubber to confirm to EU-directive 2005/69/EC,



Diameter (mm)	125
Castor Type	Fixed
Fixing Option	Plate
Height (mm)	155
Wheel Material	Rubber on Aluminium
Colour / Shore Hardness	Black Ergonomic Rubber on Aluminium Rim / 55 Shore A
Temperature Resistance	-30 °C TO +80 °C
Bearing Type	Ball
Load Capacity (kg)	200
Tread (mm)	40
Plate Size (mm)	135 x 110
Hole Centres (mm)	105/116 x 80/64
Top Plate Thickness (mm)	3
Fork Thickness (mm)	3
To Suit Fixing Bolt (mm)	10

### BIL GROUP LTD

Porte Marsh Road, Calne, Wiltshire, SN11 9BW

Registered in England No: 2603821

VAT Reg: GB572705729

