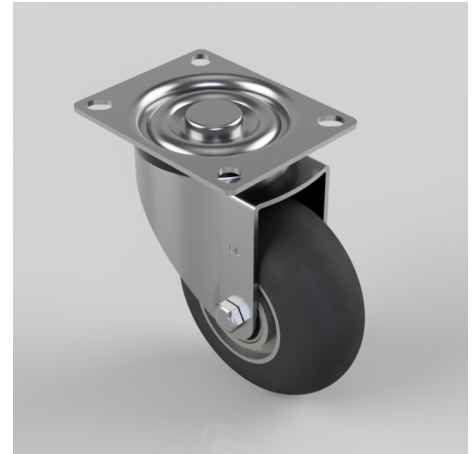


## Black Soft Elastic Rubber Plate Swivel Castor 100mm 150kg Load

**Product code: BZGMM100SRERBJ**

Pressed steel swivel castor top plate fixing fitted with a black ergonomic round profile high elastic natural 55 shore A rubber tyred aluminium centred wheel with ball bearings. Wheel diameter 100mm, tread width 40mm, overall height 128mm, top plate 98mm x 78mm, hole centres 82mm or 78mm x 62mm or 58mm. Load capacity 150kg. REACH compliant also PAH-Free rubber to confirm to EU-directive 2005/69/EC



|                          |  |
|--------------------------|--|
| Diameter (mm)            | 100  |
| Castor Type              | Swivel   |
| Fixing Option            | Plate  |
| Height (mm)              | 128  |
| Wheel Material           | Rubber on Aluminium                                  |
| Colour / Shore Hardness  | Black Ergonomic Rubber on Aluminium Rim / 55 Shore A |
| Temperature Resistance   | -30 °C TO +80 °C                                     |
| Bearing Type             | Ball   |
| Load Capacity (kg)       | 150  |
| Tread (mm)               | 40   |
| Swivel Radius (mm)       | 84   |
| Plate Size (mm)          | 98 X 78  |
| Hole Centres (mm)        | 82/78 X 62/58  |
| Top Plate Thickness (mm) | 2.5  |
| Fork Thickness (mm)      | 2.5  |
| To Suit Fixing Bolt (mm) | 8  |

### BIL GROUP LTD

Porte Marsh Road, Calne, Wiltshire, SN11 9BW

Registered in England No: 2603821

VAT Reg: GB572705729

