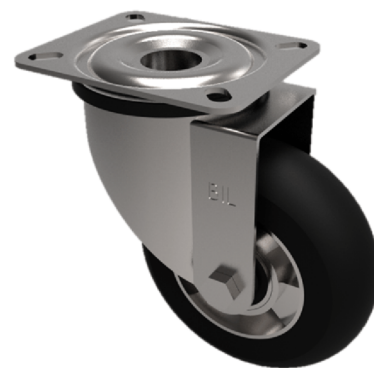


Black Soft Elastic Rubber Plate Swivel Castor 125mm 200kg Load

Product code: BZP125SRERBJ

Pressed steel swivel castor with a top plate fixing fitted with a black ergonomic high elastic natural 55 shore A round profile rubber tyre on aluminium centred wheel with ball bearings. Wheel diameter 125mm, tread width 40mm, overall height 164mm, plate size 135mm x 110mm, hole centres 105mm x 80mm. Load capacity 200kg. REACH compliant also PAH-Free rubber to confirm to EU-directive 2005/69/EC, also available with flat tread details on request



Diameter (mm)	125
Castor Type	Swivel
Fixing Option	Plate
Height (mm)	164
Wheel Material	Rubber on Aluminium
Colour / Shore Hardness	Black Ergonomic Rubber on Aluminium Rim / 55 Shore A
Temperature Resistance	-30 °C TO +80 °C
Bearing Type	Ball
Load Capacity (kg)	200
Tread (mm)	40
Swivel Radius (mm)	118
Plate Size (mm)	135 x 110
Hole Centres (mm)	105 x 80
Top Plate Thickness (mm)	6
Fork Thickness (mm)	4
To Suit Fixing Bolt (mm)	12

BIL GROUP LTD

Porte Marsh Road, Calne, Wiltshire, SN11 9BW

Registered in England No: 2603821

VAT Reg: GB572705729

