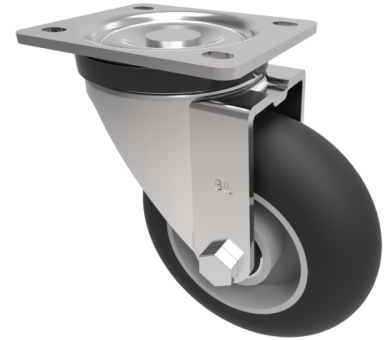


Black Soft Elastic Rubber Plate Swivel Castor 150mm 250kg Load

Product code: BZPHL150SRERBJ

Pressed steel swivel castor with a top plate fixing fitted with black ergonomic high elastic natural 55 shore A round profile rubber tyre aluminium centred wheel with ball bearings. Wheel diameter 150mm, tread width 47mm, overall height 190mm, top plate 105mm x 86mm, hole centres 80mm x 60mm. Load capacity 250kg. REACH compliant also PAH-Free rubber to confirm to EU-directive 2005/69/EC



Diameter (mm)	150
Castor Type	Swivel
Fixing Option	Plate
Height (mm)	190
Wheel Material	Rubber on Aluminium
Colour / Shore Hardness	Black Ergonomic Rubber on Aluminium Rim / 55 Shore A
Temperature Resistance	-30 °C TO +80 °C
Bearing Type	Ball
Load Capacity (kg)	250
Tread (mm)	47
Swivel Radius (mm)	130
Plate Size (mm)	105 x 86
Hole Centres (mm)	80 X 60
Top Plate Thickness (mm)	4
Fork Thickness (mm)	3.5
To Suit Fixing Bolt (mm)	8

BIL GROUP LTD

Porte Marsh Road, Calne, Wiltshire, SN11 9BW

Registered in England No: 2603821

VAT Reg: GB572705729

