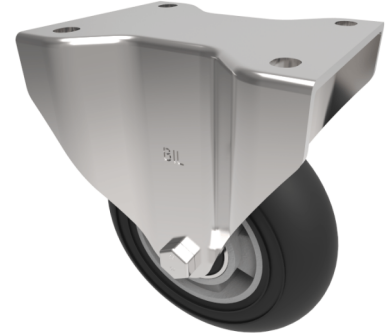


Black Soft Elastic Speed Rubber on Aluminium Plate Fixed Castor 150mm 250kg Load

Product code: BZXPF150SRERBJ



Pressed steel fixed castor with a flat plate fixing fitted with a black ergonomic high elastic natural 55 shore A round profile rubber tyre on aluminium centred wheel with ball bearings. Wheel diameter 150mm, tread width 47mm, overall height 200mm, plate size 135mm x 110mm, hole centres 105mm x 80mm. Load capacity 250kg at 4kph 100kg at 10kph. REACH compliant also PAH-Free rubber to confirm to EU-directive 2005/69/EC ** FOR INTERNAL TOWING ONLY**

| | |
|--------------------------|--|
| Diameter (mm) | 150 |
| Castor Type | Fixed |
| Fixing Option | Plate |
| Height (mm) | 200 |
| Wheel Material | Rubber on Aluminium |
| Colour / Shore Hardness | Black Ergonomic Rubber on Aluminium Rim / 55 Shore A |
| Temperature Resistance | -30 °C TO +80 °C |
| Bearing Type | Ball |
| Load Capacity (kg) | 250 |
| Tread (mm) | 47 |
| Plate Size (mm) | 135 x 110 |
| Hole Centres (mm) | 105 x 75/80 |
| Top Plate Thickness (mm) | 6 |
| Fork Thickness (mm) | 5 |
| To Suit Fixing Bolt (mm) | 10 |

BIL GROUP LTD

Porte Marsh Road, Calne, Wiltshire, SN11 9BW

Registered in England No: 2603821

VAT Reg: GB572705729

