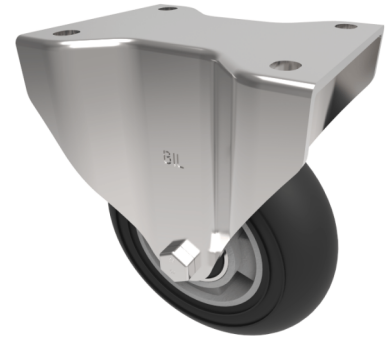


Black Soft Elastic Speed Rubber on Aluminium Plate Fixed Castor 200mm 380kg Load

Product code: BZXPF200SRERBJ



Pressed steel fixed castor with a flat plate fixing fitted with a black ergonomic high elastic natural 55 shore A round profile rubber tyre on aluminium centred wheel with ball bearings. Wheel diameter 200mm, tread width 50mm, overall height 245mm, plate size 135mm x 110mm, hole centres 105mm x 80mm. Load capacity 380kg at 4kph 152kg at 10kph. REACH compliant also PAH-Free rubber to confirm to EU-directive 2005/69/EC ** FOR INTERNAL TOWING ONLY**

Diameter (mm)	200
Castor Type	Fixed
Fixing Option	Plate
Height (mm)	245
Wheel Material	Rubber on Aluminium
Colour / Shore Hardness	Black Ergonomic Rubber on Aluminium Rim / 55 Shore A
Temperature Resistance	-30 °C TO +80 °C
Bearing Type	Ball
Load Capacity (kg)	380
Tread (mm)	50
Plate Size (mm)	135 x 110
Hole Centres (mm)	105 x 75/80
Top Plate Thickness (mm)	6
Fork Thickness (mm)	5
To Suit Fixing Bolt (mm)	10

BIL GROUP LTD

Porte Marsh Road, Calne, Wiltshire, SN11 9BW

Registered in England No: 2603821

VAT Reg: GB572705729

