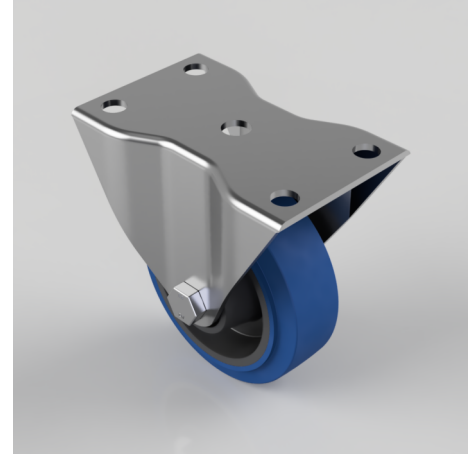


Blue Elastic Rubber 65 Shore A Plate Fixed Castor 100mm 200kg Load

Product code: BZHF100SRNBLP

Pressed steel fixed castor with a top plate fixing fitted with a blue 65 shore A elastic rubber tyre on black nylon centred wheel with roller bearings. Wheel diameter 100mm, tread width 36mm, overall height 127mm, plate size 122mm x 77mm, hole centres 100mm x 48mm. Load capacity 200kg.



Diameter (mm)	100
Castor Type	Fixed
Fixing Option	Plate
Height (mm)	127
Wheel Material	Rubber on Nylon
Colour / Shore Hardness	Blue Elastic Rubber on Nylon Rim / 65 Shore A
Temperature Resistance	-30 °C TO +80 °C
Bearing Type	Roller
Load Capacity (kg)	200
Tread (mm)	36
Plate Size (mm)	122 x 77
Hole Centres (mm)	100 x 48
Top Plate Thickness (mm)	3
Fork Thickness (mm)	3
To Suit Fixing Bolt (mm)	10

BIL GROUP LTD

Porte Marsh Road, Calne, Wiltshire, SN11 9BW

Registered in England No: 2603821

VAT Reg: GB572705729

