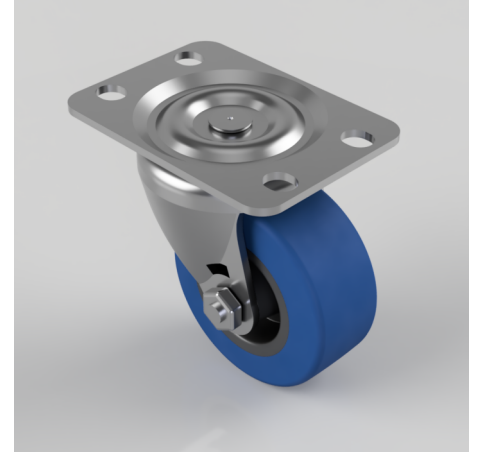


Blue Elastic Rubber 65 ShoreA Plate Swivel Castor 50mm 50kg Load

Product code: BZH50SRN

Pressed steel swivel castor with a top plate fixing fitted with a 65 shore A blue elastic rubber tyred black nylon centre wheel with a plain bore. Wheel diameter 50mm, tread width 25mm, overall height 64mm, top plate 67mm x 48mm, hole centres 56/54mm x 25mm. Load capacity 50kg



Diameter (mm)	50
Castor Type	Swivel
Fixing Option	Plate
Height (mm)	73
Wheel Material	Rubber on Nylon
Colour / Shore Hardness	Blue Elastic Rubber on Nylon Rim / 65 Shore A
Temperature Resistance	-30 °C TO +80 °C
Bearing Type	Plain
Load Capacity (kg)	50
Tread (mm)	25
Swivel Radius (mm)	38
Plate Size (mm)	67 x 48
Hole Centres (mm)	54 x 25
Top Plate Thickness (mm)	2
Fork Thickness (mm)	2
To Suit Fixing Bolt (mm)	6