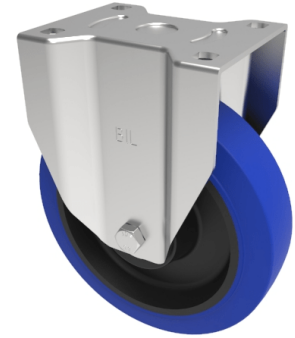


Blue Elastic Rubber 65Shore A Plate Fixed Castor 160mm 400kg Load

Product code: BZPF160SRNBJ

Pressed steel fixed castor with a top plate fixing fitted with a 65 shore A blue elastic rubber tyre on black nylon centred wheel with ball bearings. Wheel diameter 160mm, tread width 50mm, overall height 199mm, plate size 135mm x 110mm, hole centres 105mm x 80mm. Load capacity 400kg. REACH compliant also PAH-Free rubber to confirm to EU-directive 2005/69/EC



Diameter (mm)	160
Castor Type	Fixed
Fixing Option	Plate
Height (mm)	199
Wheel Material	Rubber on Nylon
Colour / Shore Hardness	Blue Elastic Rubber on Nylon Rim / 65 Shore A
Temperature Resistance	-30 °C TO +80 °C
Bearing Type	Ball
Load Capacity (kg)	400
Tread (mm)	50
Plate Size (mm)	135 x 110
Hole Centres (mm)	105 x 80
Top Plate Thickness (mm)	6
Fork Thickness (mm)	4
To Suit Fixing Bolt (mm)	12