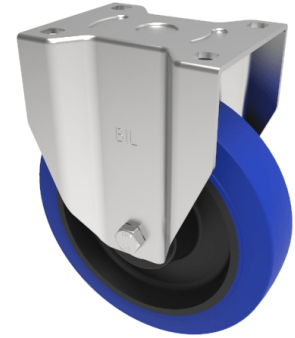


## Blue Elastic Rubber 65Shore A Plate Fixed Castor 200mm 500kg Load

**Product code: BZPF200SRNB**

Pressed steel fixed castor with a flat plate fixing fitted with a 65 shore A blue elastic rubber tyre on nylon centred wheel with ball bearings. Wheel diameter 200mm, tread width 50mm, overall height 239mm, plate size 135mm x 110mm, hole centres 105mm x 80/75mm. Load capacity 500kg.



Diameter (mm)	200
Castor Type	Fixed
Fixing Option	Plate
Height (mm)	239
Wheel Material	Rubber on Nylon
Colour / Shore Hardness	Blue Elastic Rubber on Nylon Rim / 65 Shore A
Temperature Resistance	-30 °C TO +80 °C
Bearing Type	Ball
Load Capacity (kg)	500
Tread (mm)	50
Plate Size (mm)	135 x 110
Hole Centres (mm)	105 x 80
Top Plate Thickness (mm)	6
Fork Thickness (mm)	4
To Suit Fixing Bolt (mm)	12