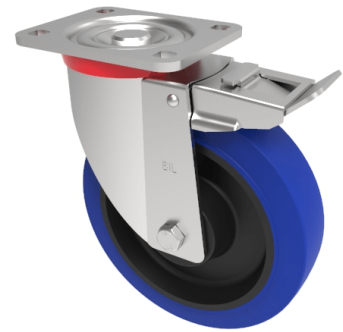


Blue Elastic Rubber 65Shore A Plate Swivel Castor Brake 160mm 400kg Load

Product code: BZP160SRNBJSWB

Pressed steel swivel castor with a top plate fixing fitted with a 65 shore A blue elastic rubber tyre on black nylon centred wheel with ball bearings and a total lock brake. Wheel diameter 160mm, tread width 50mm, overall height 199mm, plate size 135mm x 110mm, hole centres 105mm x 80/75mm. Load capacity 400kg. REACH compliant also PAH-Free rubber to confirm to EU-directive 2005/69/EC



| | |
|--------------------------|---|
| Diameter (mm) | 160 |
| Castor Type | Swivel with Total Lock Brake |
| Fixing Option | Plate |
| Height (mm) | 199 |
| Wheel Material | Rubber on Nylon |
| Colour / Shore Hardness | Blue Elastic Rubber on Nylon Rim / 65 Shore A |
| Temperature Resistance | -30 °C TO +80 °C |
| Bearing Type | Ball |
| Load Capacity (kg) | 400 |
| Tread (mm) | 50 |
| Swivel Radius (mm) | 150 |
| Plate Size (mm) | 135 x 110 |
| Hole Centres (mm) | 105 x 80 |
| Top Plate Thickness (mm) | 6 |
| Fork Thickness (mm) | 4 |
| To Suit Fixing Bolt (mm) | 12 |

BIL GROUP LTD

Porte Marsh Road, Calne, Wiltshire, SN11 9BW

Registered in England No: 2603821

VAT Reg: GB572705729

