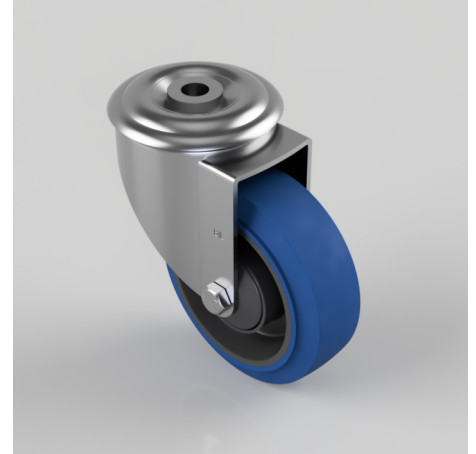


Blue Elastic Rubber 65ShoreA Bolt Hole Swivel Castor 100mm 180kg Load

Product code: BZMM100SRNBJBH12

Pressed steel swivel castor with 12mm bolt hole fixing fitted with a blue 65 shore A elastic rubber tyre on black nylon centred wheel with a ball bearing. Wheel diameter 100mm, tread width 36mm, overall height 128mm. Load capacity 180kg. REACH compliant also PAH-Free rubber to confirm to EU-directive 2005/69/EC



| | |
|--------------------------|---|
| Diameter (mm) | 100 |
| Castor Type | Swivel |
| Fixing Option | Bolt Hole |
| Height (mm) | 128 |
| Wheel Material | Rubber on Nylon |
| Colour / Shore Hardness | Blue Elastic Rubber on Nylon Rim / 65 Shore A |
| Temperature Resistance | -30 °C TO +80 °C |
| Bearing Type | Ball |
| Load Capacity (kg) | 180 |
| Tread (mm) | 36 |
| Swivel Radius (mm) | 88 |
| Head Dia (mm) | 76 |
| Fork Thickness (mm) | 2.5 |
| To Suit Fixing Bolt (mm) | 12 |

BIL GROUP LTD

Porte Marsh Road, Calne, Wiltshire, SN11 9BW

Registered in England No: 2603821

VAT Reg: GB572705729

