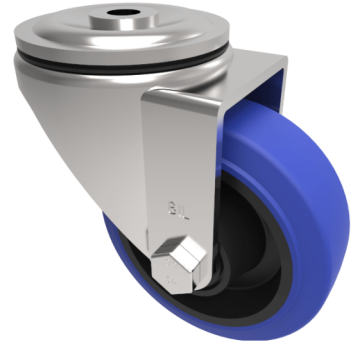


Blue Elastic Rubber 65ShoreA Bolt Hole Swivel Castor 100mm 200kg Load

Product code: BZH100SRNBBH12

Pressed steel swivel castor with a 12mm bolt hole fixing fitted with a 65 shore A blue elastic rubber tyred black nylon centred wheel with a roller bearing. Wheel diameter 100mm, tread width 36mm, overall height 128mm. Load capacity 200kg. REACH compliant also PAH-Free rubber to confirm to EU-directive 2005/69/EC



Diameter (mm)	100
Castor Type	Swivel
Fixing Option	Bolt Hole
Height (mm)	128
Wheel Material	Rubber on Nylon
Colour / Shore Hardness	Blue Elastic Rubber on Nylon Rim / 65 Shore A
Temperature Resistance	-30 °C TO +80 °C
Bearing Type	Roller
Load Capacity (kg)	200
Tread (mm)	36
Swivel Radius (mm)	90
Head Dia (mm)	76
Fork Thickness (mm)	4
To Suit Fixing Bolt (mm)	12

BIL GROUP LTD

Porte Marsh Road, Calne, Wiltshire, SN11 9BW

Registered in England No: 2603821

VAT Reg: GB572705729

