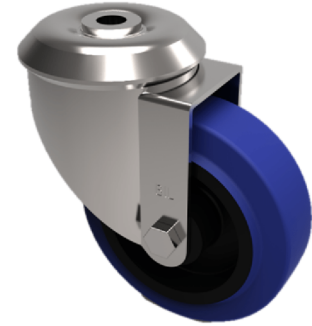


## Blue Elastic Rubber 65ShoreA Bolt Hole Swivel Castor 100mm 200kg Load

**Product code: SSEH100SRNBBH12**



Grade 304 Pressed stainless steel swivel castor with a 12mm bolt hole fitted with a 65 shore A blue elastic rubber tyred black nylon centred wheel with a roller bearing. Wheel diameter 100mm, tread width 36mm, overall height 130mm, Load capacity 200kg

Diameter (mm)	100
Fixing Option	Bolt Hole
Castor Type	Swivel
Height (mm)	128
Wheel Material	Rubber on Nylon
Colour / Shore Hardness	Blue Elastic Rubber on Nylon Rim / 65 Shore A
Bearing Type	Roller
Tread (mm)	36
Fork Thickness (mm)	3
To Suit Fixing Bolt (mm)	12
Load Capacity (kg)	200
Temperature Resistance	-30 °C TO +80 °C
Head Dia (mm)	78
Swivel Radius (mm)	90

### BIL GROUP LTD

Porte Marsh Road, Calne, Wiltshire, SN11 9BW

Registered in England No: 2603821

VAT Reg: GB572705729

