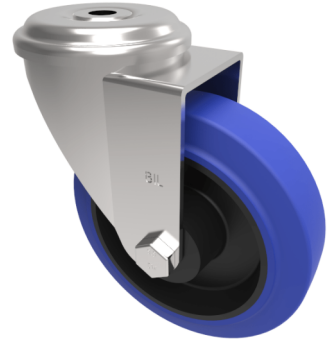


Blue Elastic Rubber 65ShoreA Bolt Hole Swivel Castor 125mm 250kg Load

Product code: BZEH125SRNBBH12



Pressed steel swivel castor with 12mm bolt hole fitted with a 65 Shore A blue elastic rubber tyre on black nylon centre with roller bearings. Wheel diameter 125mm, tread width 36mm, overall height 155mm, Load capacity 250kg. REACH compliant also PAH-Free rubber to confirm to EU-directive 2005/69/EC

Diameter (mm)	125
Castor Type	Swivel
Fixing Option	Bolt Hole
Height (mm)	155
Wheel Material	Rubber on Nylon
Colour / Shore Hardness	Blue Elastic Rubber on Nylon Rim / 65 Shore A
Temperature Resistance	-30 °C TO +80 °C
Bearing Type	Roller
Load Capacity (kg)	250
Tread (mm)	36
Swivel Radius (mm)	104
Head Dia (mm)	76
Fork Thickness (mm)	3
To Suit Fixing Bolt (mm)	12